

138.

(Med. BOSSA)

HERE'S THAT SUNNY DAY

B. KESSEL

(INTRO)

A/E

D/E

(A. 8.) A Maj⁷/E

D Maj⁷/E

A Maj⁷/E

C Maj⁷/E

F Maj⁷

B^b Maj⁷

1. B mi⁷

E⁷

C mi⁷ F⁷

B^b Maj⁷

B^b Maj⁷ E⁷(b9)

2. B mi⁷

E⁷

E mi⁷

A⁷

D mi⁷

G⁷

C Maj⁷

F Maj⁷

B^b 7

E⁺ 7

A Maj⁷/E

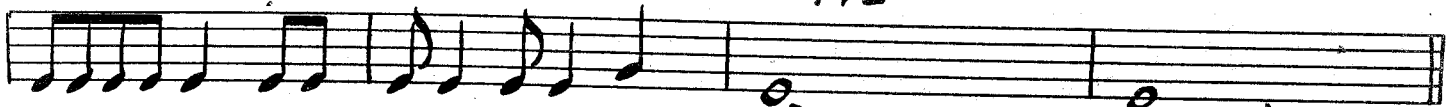
D Maj⁷/E

##)

SUNNY DAY PG. 2

AMaj7/E

CMaj7/E



FMaj7

BbMaj7



Bmi7

E7

C#mi7 C7

Bmi7 Bb7



(D.S. al CODA AFTER SOLOS)



Bmi7

E7

Cmi7

F7

Bmi7

E7

C#mi7

C7



Bmi7

E7

C#mi7

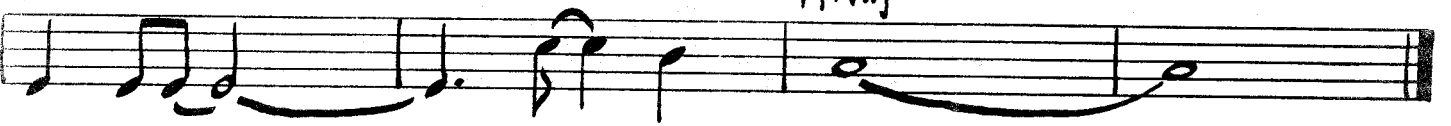
C7



Bmi7

E7

AMaj7



BARNEY KESSEL - "BARNEY PLAYS KESSEL"